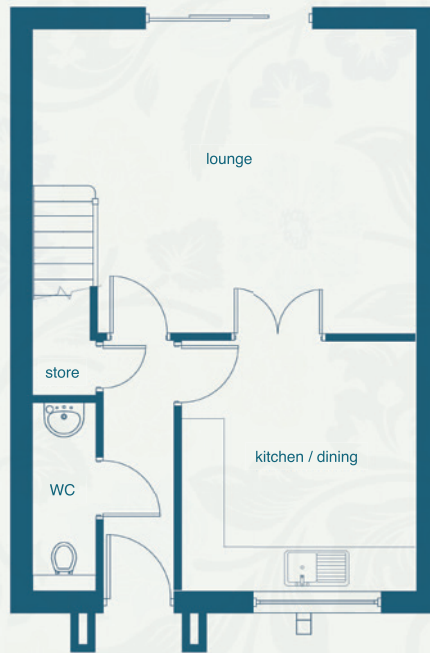




### Ground Floor

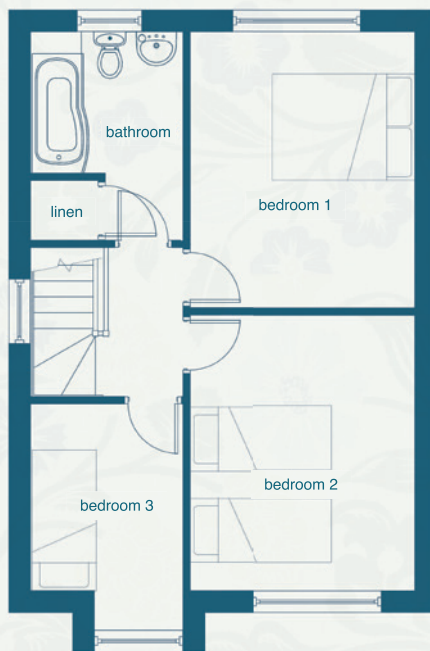


A delightful 3 bedroomed detached home with single detached garage.

Downstairs boasts a quality kitchen/diner and spacious lounge including sliding patio doors leading to the rear garden.

Upstairs there are 3 bedrooms with a family bathroom.

### First Floor



### Ground Floor

<b>Hall</b>	3500mm 11' 5"	x	1000mm 3' 3"
<b>Lounge</b>	4300mm 14' 1"	x	5450mm (max)   4550mm (min) 17' 10" (max)   14' 11" (min)
<b>Kitchen</b>	3550mm 11' 7"	x	3325mm 10' 10"
<b>Cloaks</b>	2675mm 8' 9"	x	920mm 3' 0"

### First Floor

<b>Bedroom 1</b>	3925mm 12' 10"	x	3200mm 10' 6"
<b>Bedroom 2</b>	3925mm 12' 10"	x	3200mm 10' 6"
<b>Bedroom 3</b>	3200mm (max)   2675mm (min) 10' 6" (max)   8' 9" (min)	x	2150mm 7' 0"
<b>Bathroom</b>	2025mm 6' 7"	x	2150mm 7' 0"

## Winding Way

### Bussey & Armstrong Homes

These particulars and dimensions are set out as a general outline only for the guidance of intending purchasers. They do not constitute, nor constitute part of, an offer or contract and are not intended to induce same. Intending purchasers must satisfy themselves as to the correctness of them. Internal layouts and window positions may vary depending on plot.



Sales: 01325 365 717 Office: 01325 462 137  
[www.busseyarmstrong.co.uk](http://www.busseyarmstrong.co.uk)