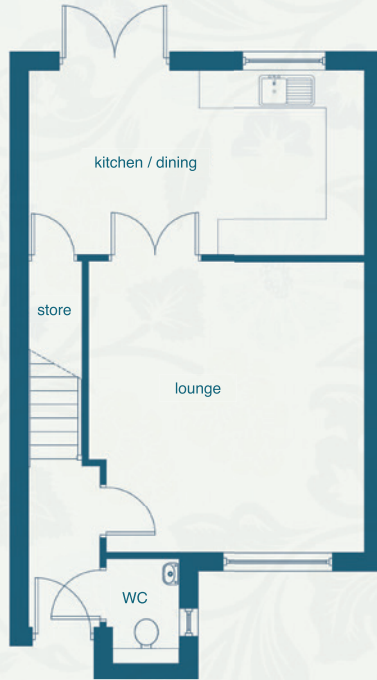




## Ground Floor



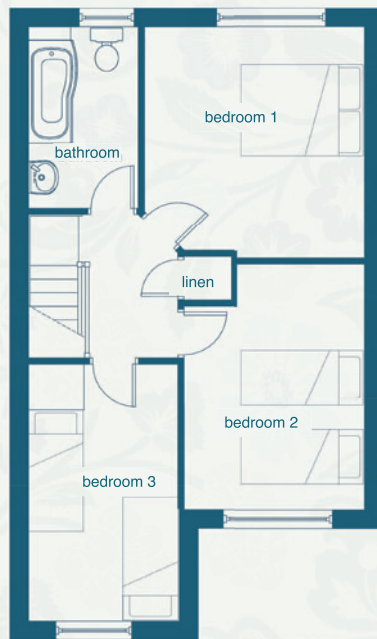
A superb family sized 3 bedroom semi-detached home.

The ground floor offers a spacious separate lounge and high quality fitted kitchen/diner with patio doors leading out to the garden.

The first floor has 3 double bedrooms and a family bathroom.

An ideal home for the growing family.

## First Floor



### Ground Floor

#### Hall

2360mm x 1200mm  
7' 8" x 3' 11"

#### Lounge

4800mm x 4500mm (max) | 4250mm (min)  
15' 9" x 14' 9" (max) | 13' 11" (min)

#### Kitchen/Dining

3050mm x 5550mm  
10' 0" x 18' 2"

#### WC

1725mm x 1000mm  
5' 7" x 3' 3"

### First Floor

#### Bedroom 1

3800mm x 3625mm  
12' 5" x 11' 10"

#### Bedroom 2

4045mm (max) | 3250mm (min) x 2975mm (max) | 2095mm (min)  
13' 3" (max) | 10' 8" (min) x 9' 9" (max) | 6' 10" (min)

#### Bedroom 3

4220mm x 2475mm  
13' 10" x 8' 1"

#### Bathroom

2980mm x 1825mm  
9' 9" x 5' 11"

## Winding Way

## Bussey & Armstrong Homes

These particulars and dimensions are set out as a general outline only for the guidance of intending purchasers. They do not constitute, nor constitute part of, an offer or contract and are not intended to induce same. Intending purchasers must satisfy themselves as to the correctness of them. Internal layouts and window positions may vary depending on plot.