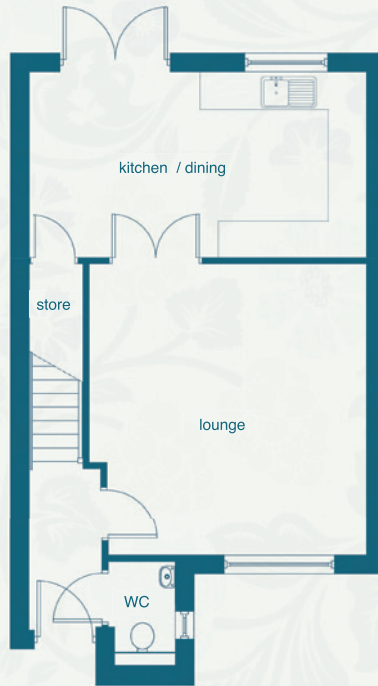
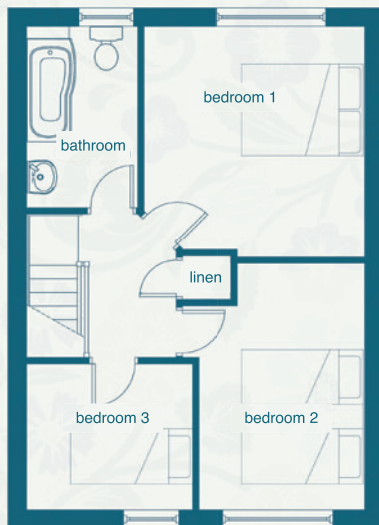


Ground Floor



First Floor



A delightful 3 bedroom semi-detached home with spacious ground floor living accommodation, including a family kitchen/diner with quality fitted kitchen and appliances.

Patio doors lead from the dining area onto the garden. The first floor features 3 bedrooms with family bathroom.

Ground Floor

Hall		
2360mm	x	1200mm
7' 8"	x	3' 11"
Lounge		
4800mm	x	4500mm (max) 4250mm (min)
15' 9"	x	14' 9" (max) 13' 11" (min)
Kitchen/Dining		
3050mm	x	5550mm
10' 0"	x	18' 2"
WC		
1725mm	x	1000mm
5' 7"	x	3' 3"

First Floor

Bedroom 1		
3800mm	x	3625mm
12' 5"	x	11' 10"
Bedroom 2		
4045mm (max) 3250mm (min)	x	2975mm (max) 2095mm (min)
13' 3" (max) 10' 8" (min)	x	9' 9" (max) 6' 10" (min)
Bedroom 3		
2395mm	x	2725mm
7' 10"	x	8' 11"
Bathroom		
2980mm	x	1825mm
9' 9"	x	5' 11"

Winding Way

Bussey & Armstrong Homes

These particulars and dimensions are set out as a general outline only for the guidance of intending purchasers. They do not constitute, nor constitute part of, an offer or contract and are not intended to induce same. Intending purchasers must satisfy themselves as to the correctness of them. Internal layouts and window positions may vary depending on plot.



Sales: 01325 365 717 Office: 01325 462 137
www.busseyarmstrong.co.uk