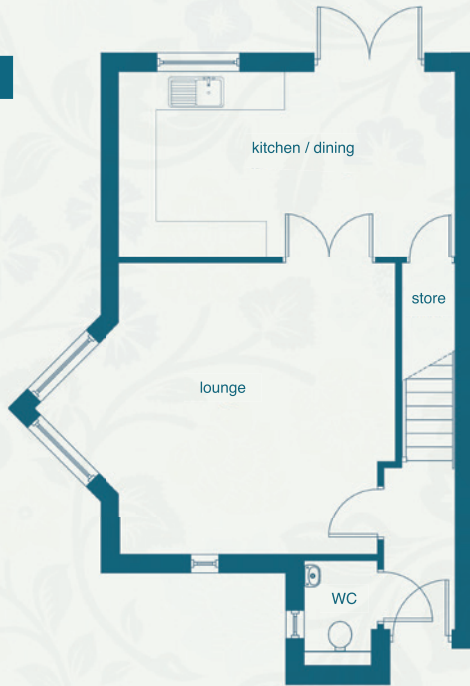




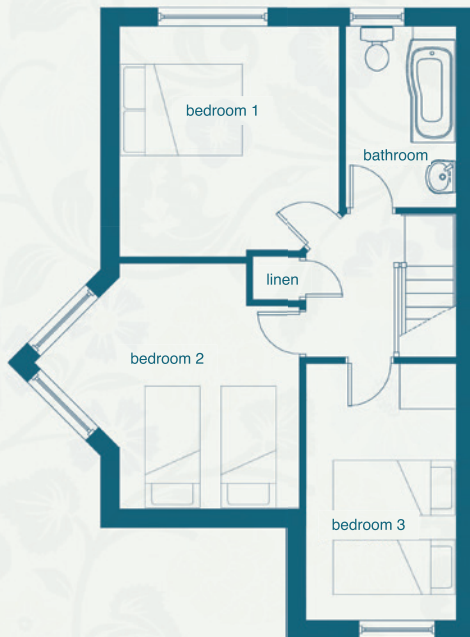
Ground Floor



A stunning family sized 3 bedroom semi-detached home with detached garage. Downstairs offers a spacious separate lounge with corner bay window, plus a quality fitted kitchen/diner with patio doors leading out to the garden. Upstairs has 3 double bedrooms and a family bathroom.

A perfect family home.

First Floor



Ground Floor

Hall 2360mm 7' 8"	x 1200mm x 3' 11"
Lounge 4800mm 15' 9"	x 5900mm (max) 4250mm (min) x 19' 4" (max) 13' 11" (min)
Kitchen/Dining 3050mm 10' 0"	x 5550mm x 18' 2"
WC 1725mm 5' 7"	x 1000mm x 3' 3"

First Floor

Bedroom 1 3800mm 12' 5"	x 3625mm x 11' 10"
Bedroom 2 4045mm (max) 3250mm (min) 13' 3" (max) 10' 8" (min)	x 2975mm (max) 2095mm (min) x 9' 9" (max) 6' 10" (min)
Bedroom 3 4220mm 13' 10"	x 2475mm x 8' 1"
Bathroom 2980mm 9' 9"	x 1825mm x 5' 11"

Winding Way

Bussey & Armstrong Homes

These particulars and dimensions are set out as a general outline only for the guidance of intending purchasers. They do not constitute, nor constitute part of, an offer or contract and are not intended to induce same. Intending purchasers must satisfy themselves as to the correctness of them. Internal layouts and window positions may vary depending on plot.



Sales: 01325 365 717 Office: 01325 462 137
www.busseyarmstrong.co.uk