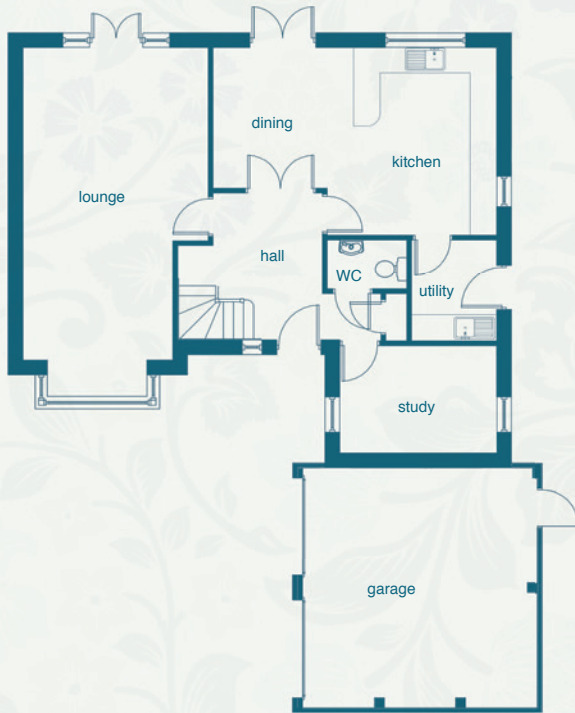




Ground Floor



A stunning and spacious 4 bedroom detached family home with double garage. The ground floor has a large lounge and kitchen/diner with utility room plus a study or family room. The first floor has 4 double bedrooms, the master bedroom boasting an en-suite bathroom and dressing room. A fantastic family home.

Ground Floor

Lounge
7875mm (max) | 7100mm (min) x 4200mm (max) | 3400mm (min)
25' 10" (max) | 23' 4" (min) x 13' 9" (max) | 11' 2" (min)

Kitchen / Dining
4260mm (max) | 3200mm (min) x 6400mm (max) | 3825mm (min)
14' 0" (max) | 10' 8" (min) x 21' 0" (max) | 12' 7" (min)

Study
2450mm x 3500mm
8' 0" x 11' 6"

Utility
2290mm x 1925mm
7' 6" x 6' 4"

WC
1115mm x 1800mm
3' 8" x 5' 11"

Ground Floor

Bedroom 1
6600mm x 3570mm
21' 8" x 11' 9"

En-suite
3300mm x 2500mm
10' 10" x 8' 2"

Dressing
2080mm x 1800mm
6' 10" x 5' 11"

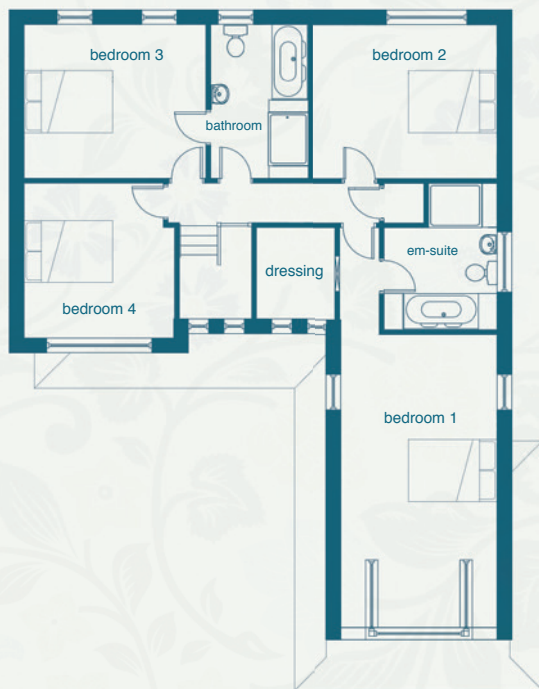
Bedroom 2
3470mm x 4200mm
11' 5" x 13' 9"

Bedroom 3
3470mm x 4100mm
11' 5" x 13' 5"

Bedroom 4
3530 (max) | 2260 (min) x 3400 (max) | 3140 (min)
11' 7" (max) | 7' 5" (min) x 11' 2" (max) | 10' 4" (min)

Bathroom
3470mm x 2200mm
11' 5" x 7' 3"

First Floor



Winding Way

Bussey & Armstrong Homes

These particulars and dimensions are set out as a general outline only for the guidance of intending purchasers. They do not constitute, nor constitute part of, an offer or contract and are not intended to induce same. Intending purchasers must satisfy themselves as to the correctness of them. Internal layouts and window positions may vary depending on plot.



Sales: 01325 365 717 Office: 01325 462 137
www.busseyarmstrong.co.uk