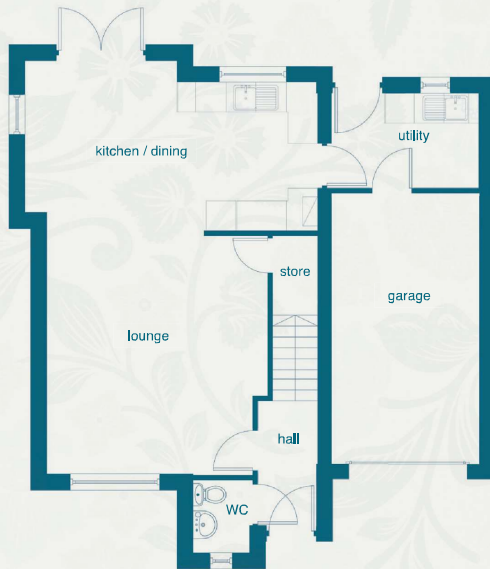


Knebworth

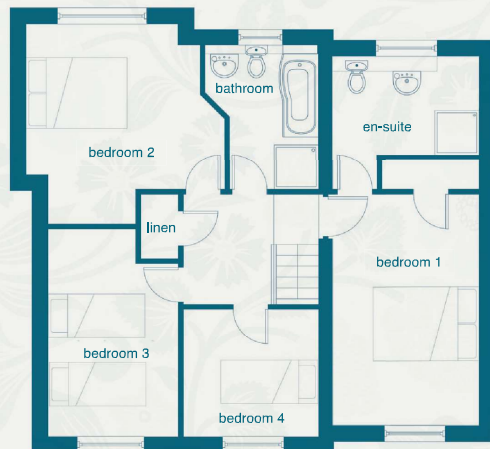
4 Bedroom Detached



Ground Floor



First Floor



Jeremiah Drive

A superb 4 bedroom detached home with an integral garage and driveway.

Downstairs offers spacious living accommodation with an open plan lounge/kitchen/dining area. It has the added bonus of a useful utility room. Upstairs are 4 bedrooms plus family bathroom. The master bedroom has an en-suite. An ideal family home.

Ground Floor

Hall 2430mm 7' 11"	x	2180mm x 6' 5"
Lounge 4855mm (max) 15' 11"	x	4450mm (max) 4190mm (min) x 14' 7" (max) 13' 9" (min)
Kitchen/Dining 3025mm 9' 11"	x	5850mm x 19' 2"
Utility 1930mm 6' 4"	x	3000mm x 9' 10"
WC 1500mm 4' 11"	x	1180mm x 3' 10"

First Floor

Bedroom 1 4700mm 15' 5"	x	3000mm x 9' 10"
Bedroom 2 4095mm (max) 3120mm (min) 13' 5" (max) 10' 3" (min)	x	4040mm (max) 1800mm (min) x 13' 3" (max) 5' 11" (min)
Bedroom 3 4225mm (max) 3500mm (min) 13' 10" (max) 11' 6" (min)	x	2660mm (max) 1800mm (min) x 8' 9" (max) 5' 11" (min)
Bedroom 4 2600mm 8' 6"	x	2740mm x 8' 11"
En-suite 2000mm 6' 6"	x	3000mm x 9' 10"
Bathroom 2950mm 9' 8"	x	1800mm x 5' 10"

Bussey & Armstrong Homes

These particulars and dimensions are set out as a general outline only for the guidance of intending purchasers. They do not constitute, nor constitute part of, an offer or contract and are not intended to induce same. Intending purchasers must satisfy themselves as to the correctness of them. Internal layouts and window positions may vary depending on plot.



Sales: 01325 365 717 Office: 01325 462 137
www.busseyarmstrong.co.uk