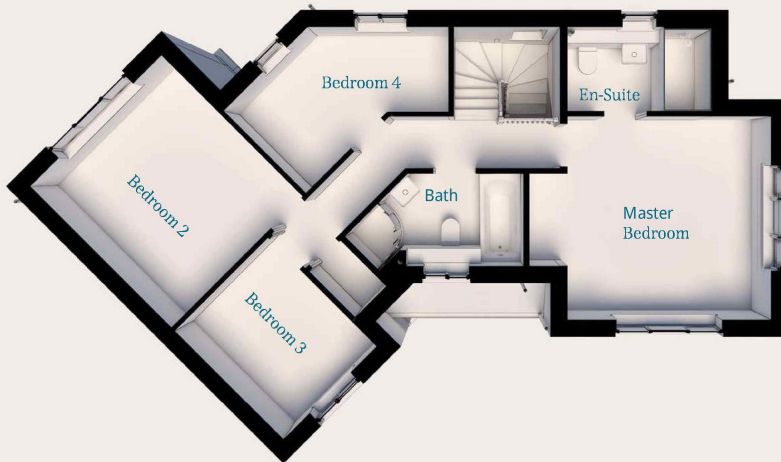


The Walworth

A charming 4 bedroom detached home
with a spacious lounge plus kitchen family room.

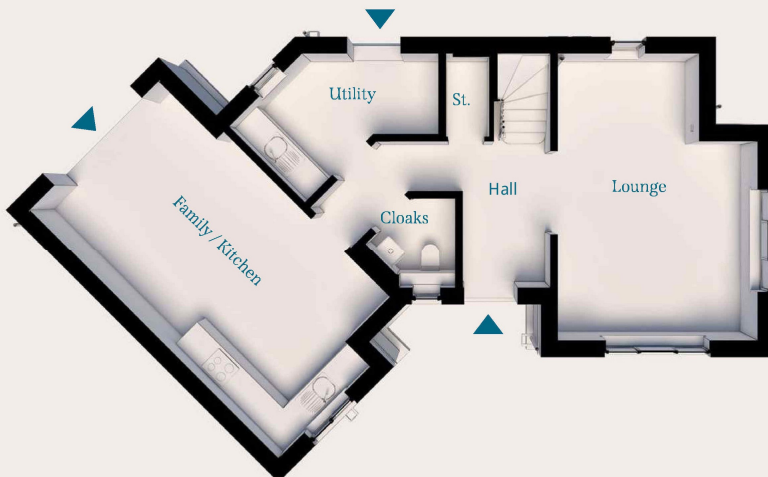


An impressive family home.



First Floor

Master Bedroom	3.85m x 3.89m	12' 6" x 12' 8"
En-suite	1.60m x 2.72m	5' 2" x 8' 9"
Bedroom 2	3.78m x 3.50m	12' 4" x 11' 5"
Bedroom 3	2.05m x 2.48m	6' 7" x 8' 1"
Bedroom 4	2.20m x 4.10m	7' 2" x 13' 5"
Bathroom	1.75m x 3.35m	5' 7" x 11' 0"



Ground Floor

Lounge	5.53m x 3.85m	18' 1" x 12' 6"
Kitchen/Family	6.81m x 3.75m	22' 4" x 12' 3"
Utility	2.05m x 3.85m	6' 7" x 12' 6"

All dimensions are maximum.

CGIs are for illustrative purposes only; external finishes e.g. roof tile colours, brick, stone, render and landscaping vary between plots. Properties may also be built 'handed' (mirror image) of those illustrated. Dimensions are for guidance only and all measurements and areas may vary during construction. Dimensions are not to be used for carpet sizes, appliance space or items of furniture. Bathroom and kitchen layouts are indicative only and do not form any part of your contract. Please speak to a member of the sales team for plot specific information.