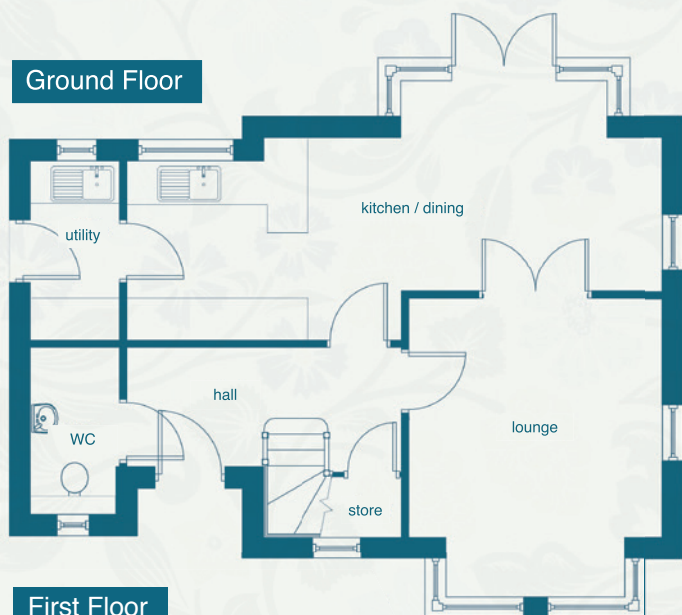
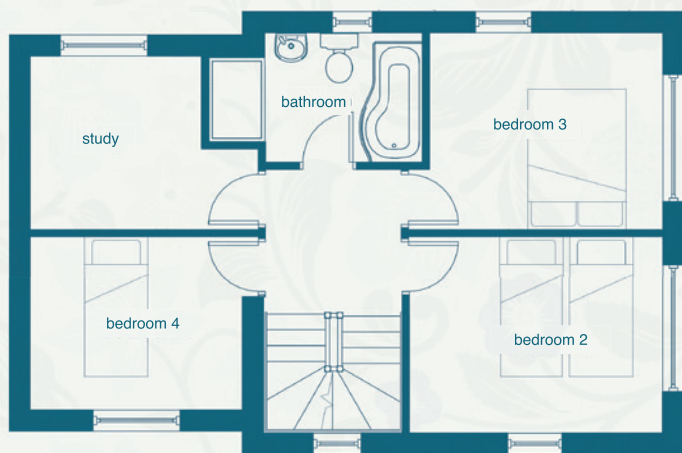




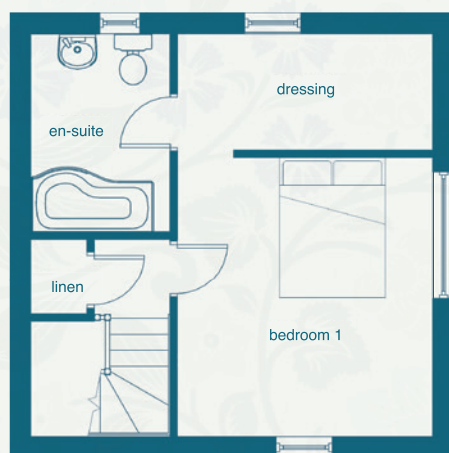
Ground Floor



First Floor



Second Floor



An exceptional 3 storey 4/5 bed roomed family home with double garage.

Fantastic ground floor family living accommodation with kitchen/diner/family room and separate lounge. The first floor has a family bathroom as well as 3 generous bedrooms and a further bedroom/study. The second floor has large master bedroom including a dressing room and en-suite bathroom.

A fabulous family home.

Ground Floor

Hall

1800mm (max) | 1200 mm (min) x 3930mm
5' 10" (max) | 3'11" (min) x 12' 10"

Lounge

4200mm (max) | 3400mm (min) x 2500mm (min) 3620mm (max)
13' 9" (max) | 11'2" (min) x 8' 2 (min) | 11'10" (max)

Kitchen / Family Room

3000mm (max) | 2200mm (min) x 7650mm
9' 10" (max) 7'2"(min) x 25' 1"

Utility

2570mm x 1275mm
8' 5" x 4' 2"

WC

2370mm x 1275mm
7' 9" x 4' 2"

First Floor

Study

2470mm (max) | 810mm (min) x 3200mm (max) | 2075mm (min)
8' 1" (max) 2' 8" (min) x 10' 6" (max) | 6'9"(min)

Bedroom 2

2800mm x 3625mm
9' 2" x 11' 10"

Bedroom 3

2800mm x 3325mm
9' 2" x 10' 11"

Bedroom 4

2470mm x 3025mm
8' 1" x 9' 11"

Bathroom

1800mm (max) | 1500mm (min) x 3400mm (max) | 2280mm (min)
5' 11" (max) | 4' 11" (min) x 11' 2" (max) | 7' 6" (min)

Second Floor

Master

Bedroom

3960mm x 3625mm
12' 11" x 11' 10"

Dressing

1645mm x 3625mm
5' 4" x 11' 10"

En-Suite

2800mm x 1980mm
9' 2" x 6' 6"

Winding Way

Bussey & Armstrong Homes

These particulars and dimensions are set out as a general outline only for the guidance of intending purchasers. They do not constitute, nor constitute part of, an offer or contract and are not intended to induce same. Intending purchasers must satisfy themselves as to the correctness of them. Internal layouts and window positions may vary depending on plot.