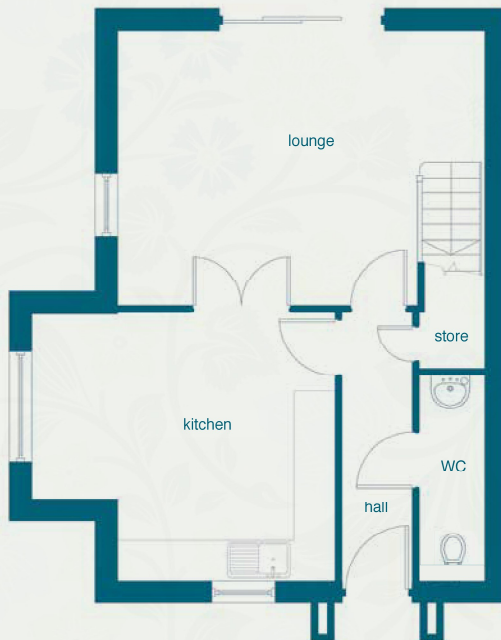


Ground Floor



First Floor



A beautiful end mews property with a spacious lounge and kitchen dining room, plus separate hallway and WC.

The 1st floor has 3 bedrooms with a large airy master bedroom and family bathroom with separate bath and shower

A lovely family home in a quiet cul-de-sac courtyard.

Ground Floor

Lounge

3970mm (max) | 2000mm (min) x 5300mm (max) | 4300mm (min)
13' 0" (max) | 6' 6" (min) x 17' 4" (max) | 14' 10" (min)

Kitchen/Dining

3870mm (max) | 2690mm (min) x 4380mm (max) | 3150mm (min)
12' 8" (max) | 8' 9" (min) x 14' 4" (max) | 10' 4" (min)

WC

2970mm x 900mm
9' 8" x 2' 11"

First Floor

Bedroom 1

4270mm (max) | 2690mm (min) x 4260mm (max) | 3030mm (min)
14' 0" (max) | 8' 9" (min) x 13' 11" (max) | 9' 11" (min)

Bedroom 2

3570mm x 3030mm
11' 8" x 9' 11"

Bedroom 3

2570mm x 2170mm
8' 5" x 7' 1"

Bathroom

2670mm x 2170mm
8' 9" x 7' 1"

Jeremiah Drive

Bussey & Armstrong Homes

These particulars and dimensions are set out as a general outline only for the guidance of intending purchasers. They do not constitute, nor constitute part of, an offer or contract and are not intended to induce same. Intending purchasers must satisfy themselves as to the correctness of them. Internal layouts and window positions may vary depending on plot.

 **westpark** Garden Village

Sales: 01325 365 717 Office: 01325 462 137

www.busseyarmstrong.co.uk