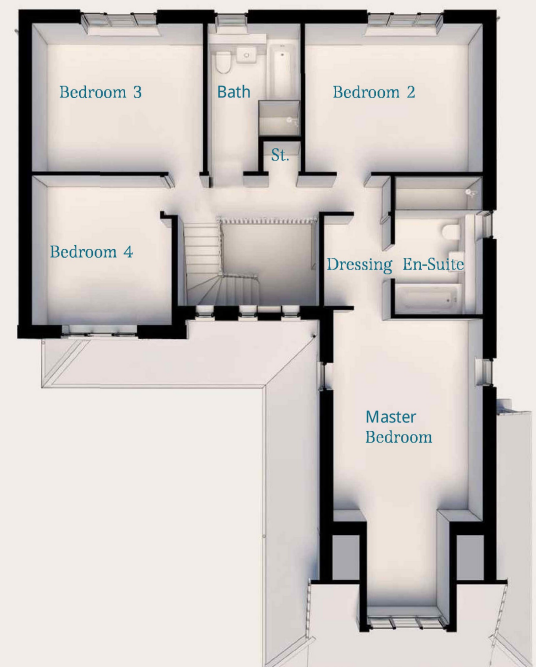
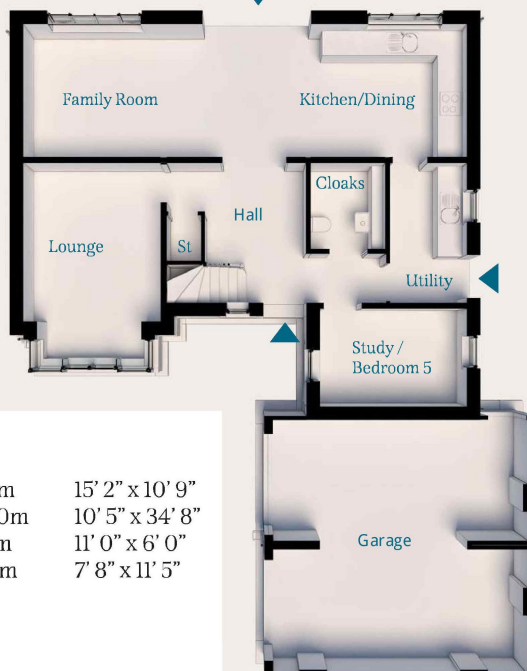


The Carlton

A stunning 4/5 bedroom detached family home.

Spacious and bright open plan living.

A wonderful family home.



Ground Floor

Lounge	4.63m x 3.32m	15' 2" x 10' 9"
Kitchen/Family	3.20m x 10.60m	10' 5" x 34' 8"
Utility	3.36m x 1.82m	11' 0" x 6' 0"
Study/Bedroom 5	2.38m x 3.50m	7' 8" x 11' 5"

First Floor

Master Bedroom	7.11m x 3.54m	23' 3" x 11' 6"
En-suite	3.30m x 2.10m	10' 8" x 6' 9"
Bedroom 2	3.50m x 4.20m	11' 5" x 13' 8"
Bedroom 3	3.50m x 4.02m	11' 5" x 13' 2"
Bedroom 4	3.55m x 3.04m	11' 6" x 10' 0"
Bathroom	3.50m x 2.22m	11' 5" x 7' 3"

All dimensions are maximum.

CGIs are for illustrative purposes only; external finishes e.g. roof tile colours, brick, stone, render and landscaping vary between plots. Properties may also be built 'handed' (mirror image) of those illustrated. Dimensions are for guidance only and all measurements and areas may vary during construction. Dimensions are not to be used for carpet sizes, appliance space or items of furniture. Bathroom and kitchen layouts are indicative only and do not form any part of your contract. Please speak to a member of the sales team for plot specific information.